



SHIPROCK AGENCY BRANCH OF NATURAL RESOURCES

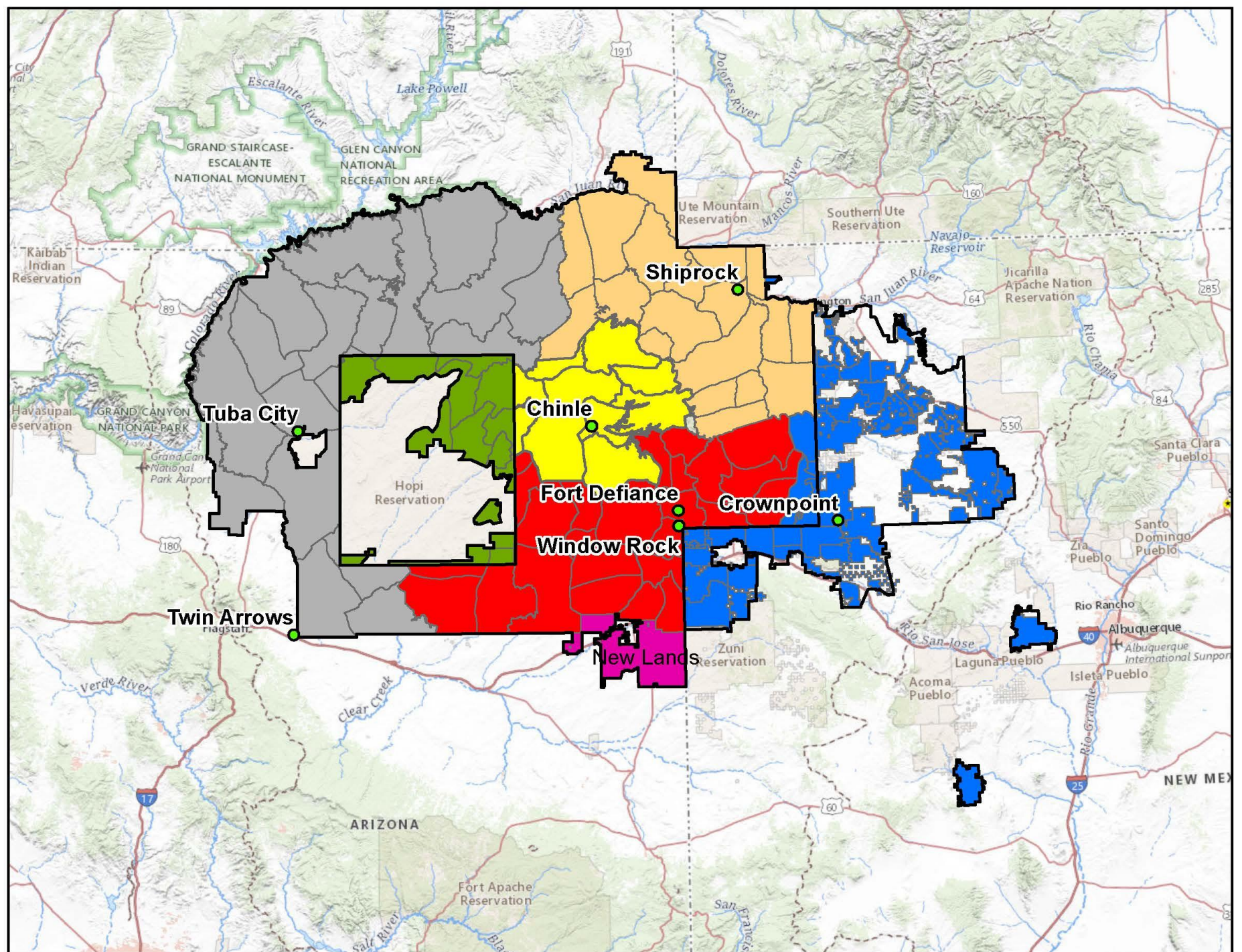
SHIPROCK, NEW MEXICO

- ▶ The BIA Navajo Region is made up of five agencies and the Navajo Partition Land
- ▶ The agencies are administered by the Navajo Regional office located in Gallup New Mexico

BIA NAVAJO REGION

Legend

-  Navajo Nation Boundary
-  New Lands
-  Chinle Agency
-  Eastern Navajo Agency
-  Navajo Partitioned Lands
-  Fort Defiance Agency
-  Shiprock Agency
-  Western Navajo Agency



SHIPROCK AGENCY



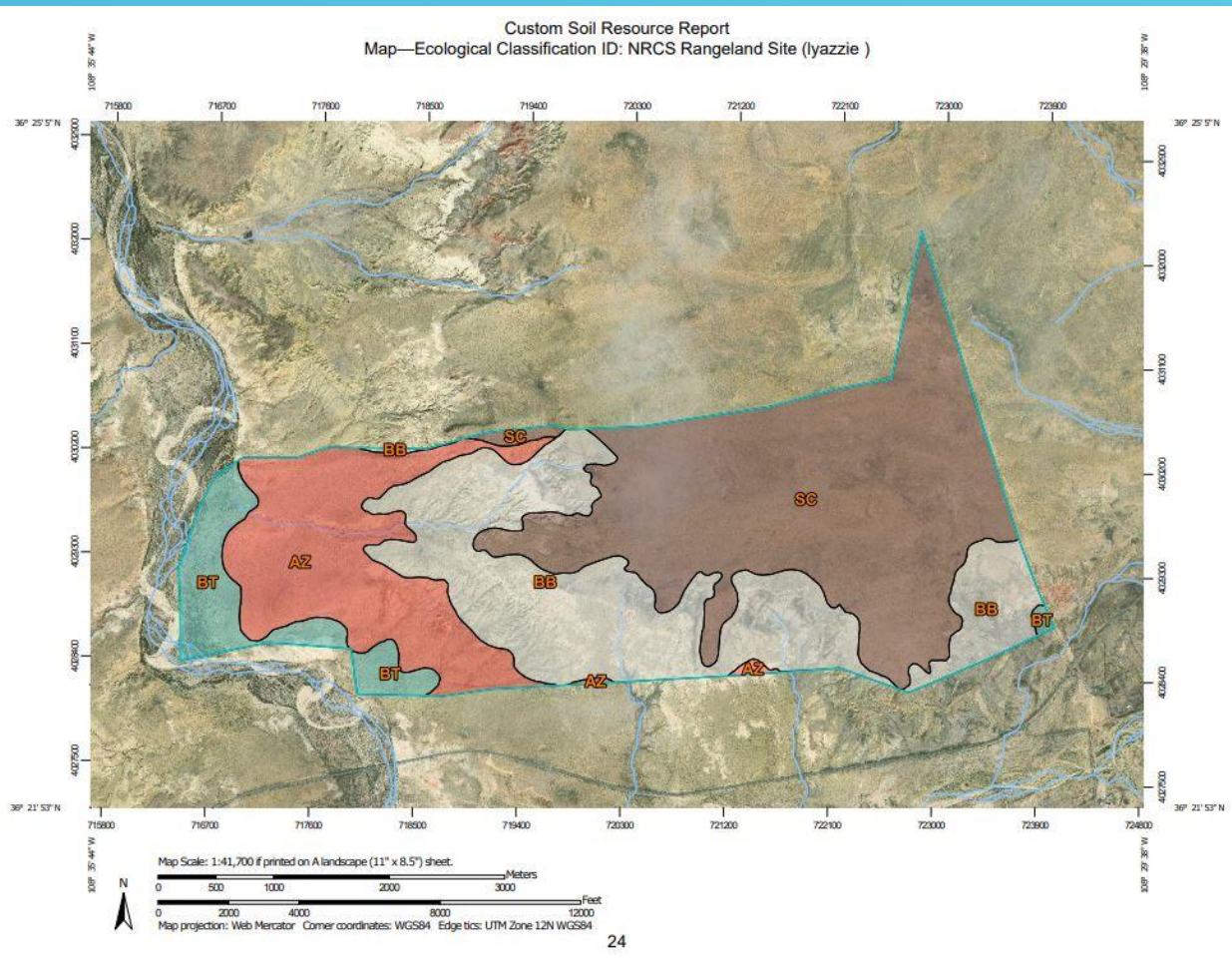
- ▶ The agency is approximately 2.7 million acres.
- ▶ The agency spans 3 states New Mexico, Arizona and Utah respectively.
- ▶ The agency assists Farm board representatives and Grazing officials from 20 chapters.

SHIPROCK AGENCY



SHIPROCK AGENCY WHAT WE DO

- Provide technical assistance to tribal members and the tribal government
- Administer Land Use permits and Grazing permits in Shiprock agency.
- Provide funding opportunities for projects that preserve trust assets



TECHNICAL ASSISTANCE

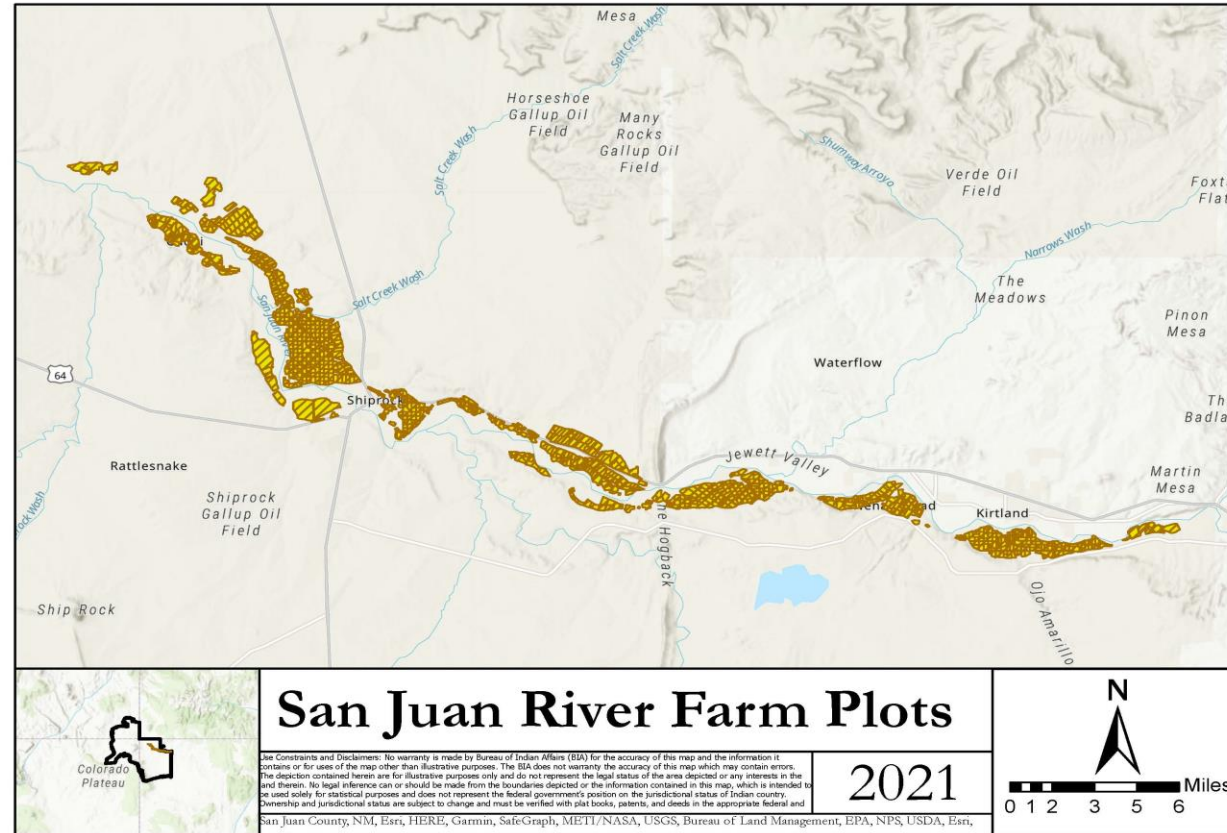
- Provide Conservation planning assistance
- Provide Mapping of Range Units and Farm Plots
- Provide permittee information to grazing officials and tribal departments.
- Research the origin of respective permits.
- Report Tally Count information to the BIA central office.

TYPES OF LAND USE PERMITS

- **Land use permits (LUP) for dry land farming. Request/Applications should be made at the appropriate Grazing Committee Meeting.**
- **Land use permits (LUP) for irrigated farming. Request/Applications should be made to the appropriate Farm Board Meeting.**

In both cases the process for submitting and approving applications for LUP has to follow guidelines outlined in Navajo Nation Code Title 3 § 151, § 152, § 211 and § 212

- ▶ Gadiiahi
- ▶ Tsedaakaan
- ▶ Shiprock
- ▶ Upper Fruitland
- ▶ Nenahnezad
- ▶ San Juan



SAN JUAN RIVER IRRIGATION PROJECT

San Juan River Irrigation Project

- ▶ The project consists of 3 ditch systems; Fruitland, Hogbak and Cudeii ditch systems
- ▶ The project covers the chapters of: Upper Fruitland, Nenahnezad, San Juan, Tse Daa Kaan, Shiprock & Gadiiahi
- ▶ The acreage serviced by the ditch systems are:
 - ▶ Cudeii, 688.96 AC; 52 LUPs
 - ▶ Fruitland, 4,498.9 AC; 353 LUPs
 - ▶ Hogback, 6,490.5 AC; 543 LUPs

ON FIELD IRRIGATION SYSTEMS

- ▶ For the most part all the on-field irrigation systems are a form of flood-based irrigation systems





TYPES OF FLOOD SYSTEMS

- ▶ Gated Pipe irrigation systems. Are systems where the water is distributed across a field using a pipe with gates.
- ▶ Conventional flood systems which the fields use an earthen ditch to flood the field.
- ▶ The object of both of these systems is to flood these fields.



ISSUES THE BIA AND OTHER AGENCIES ENCOUNTER



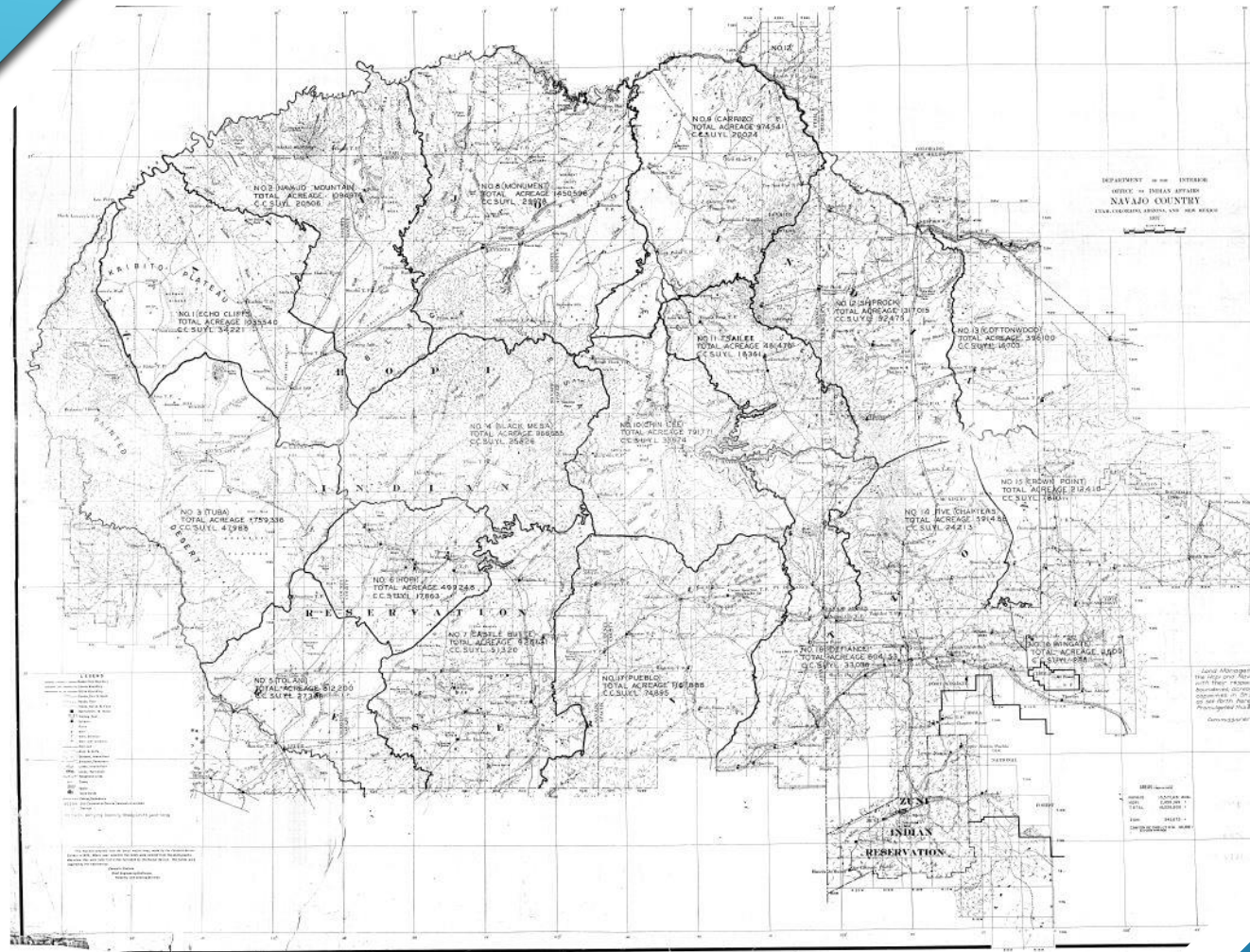
- ▶ The irrigation system itself is outdated and underdeveloped
- ▶ Most of fields on the project are flood irrigated
- ▶ Siphon pumps are always breaking down
- ▶ Some farmers do not follow the watering schedule which deprives water from other farmers on their respective ditch
- ▶ Sediment filled water.



Here the farmer is using a piece of sheet metal in lieu of a gate valve

RANGE

The grazing districts were established in 1937 before the issuance of grazing permits



6.92 x 35.80 in



RANGE

- ▶ The BIA administers a total of 2003 grazing permits within Shiprock Agency
- ▶ The permits were first issued around 1942
- ▶ Unlike other agencies or tribes Navajo Nation Grazing permits use Sheep Units
- ▶ 4 Sheep Units equates to one Cow or 1.25 horses

Puggie RMU



The Chuska mountains



HERE WAS THE CONDITION OF SOME OF
THE RANGE AREAS DURING THE DRY
MONTHS BEFORE WE RECEIVED RAIN

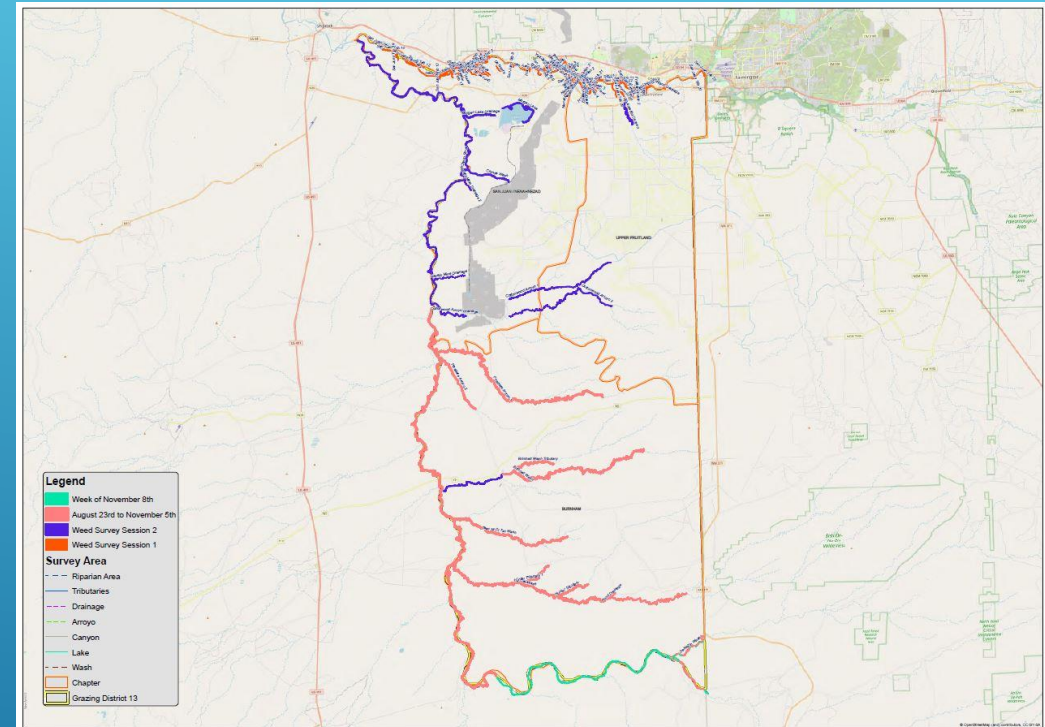
ISSUES: PERMIT STATUS

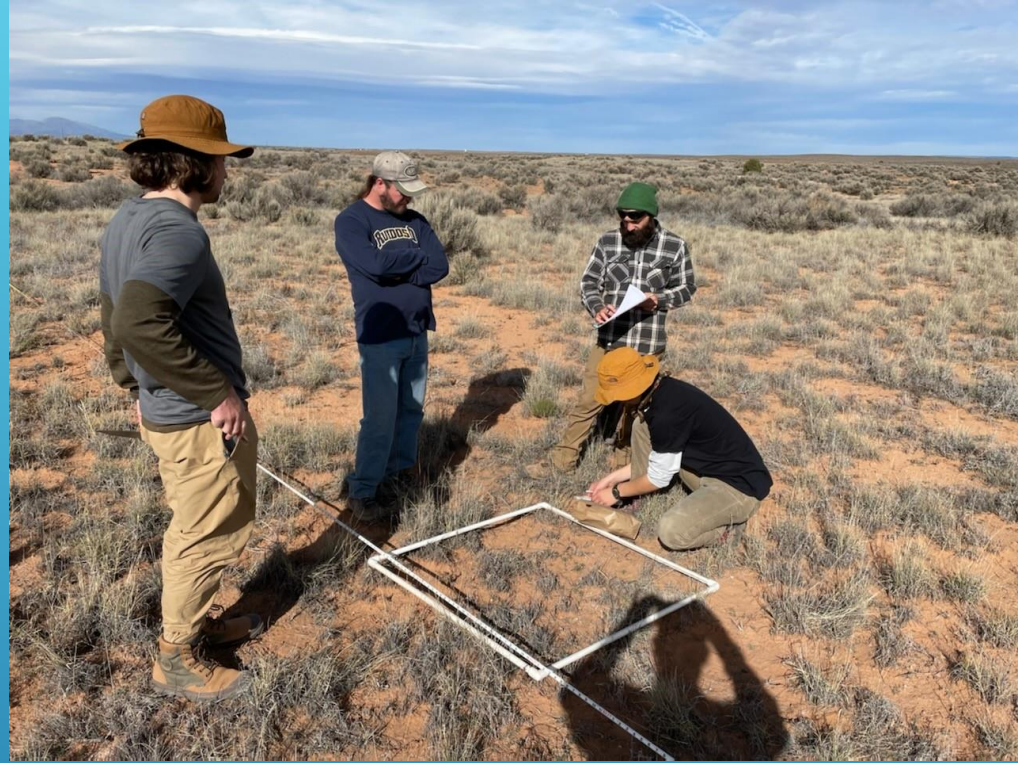
- ▶ Some permits have multiple names on them. The permits with multiple names are a problem because in essence it's a fracturing of Grazing permits and LUPs on the Navajo Nation
- ▶ Some permits are in trust status. Where a trustee is appointed for a group of people.
- ▶ Some farm plots and range areas have been urbanized.
- ▶ Idle farm plots
- ▶ Absentee permittees
- ▶ Grazing permits and LUPs in need of probate
- ▶ Feral Horses



RECENT BIA FUNDED PROJECTS

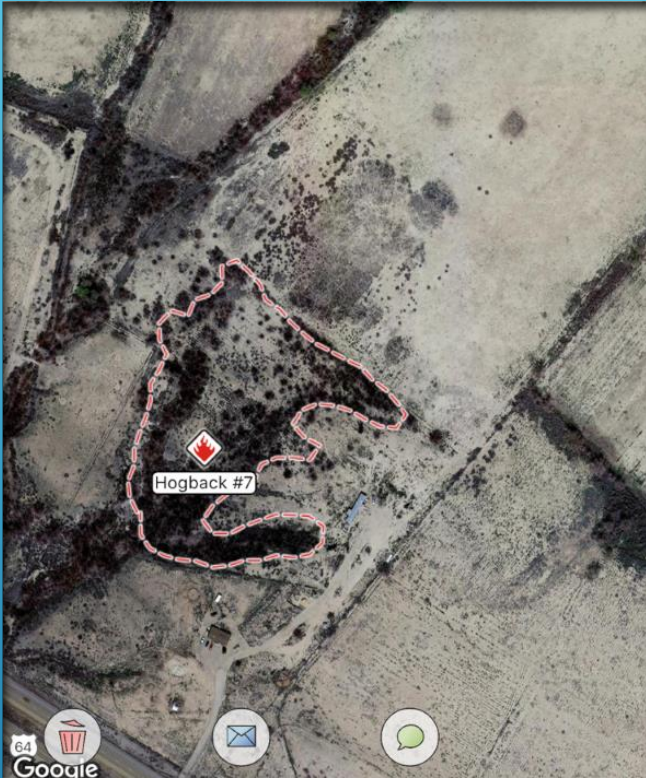
- ▶ District 13 weed inventory
- ▶ District 12 weed inventory (Part 2)
- ▶ District 13 biological and cultural resources inventory
- ▶ McCracken Mesa Range Inventory





CURRENT PROJECTS

OTHER DEPARTMENTS: BIA FIRE



- ▶ According to BIA fire about 75% of all fire calls in the Shiprock agency are field burning/clearing activities which become out of control.



BIA ENGINEERING

- ▶ Over the years there have been improvements to the main ditches in each respective project.
- ▶ The most of the Cudeii main ditch has been replaced by underground irrigation pipe.
- ▶ Some segments of the main ditches from Upper Fruitland to San Juan Chapter were converted to a concrete lined ditch. And some of the laterals were converted to pipe.
- ▶ Shiprock also has some segments of concrete lined ditches.





QUESTIONS?